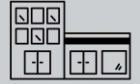




We Show Up



We Bring It



We Do It Right

American Legion Donation

We are beyond thrilled to announce our latest community partnership! Along with Northwestern Glass Fab, we have donated a new aluminum and glass storefront for the dedicated heroes at The American Legion in St. Michael, MN.

THE CHALLENGE

The VA did this project to make a handicap accessible entrance for their customers. The VA previously didn't have a handicap accessible entrance and was hard for the customers in wheelchairs to make it in and out of the building. The VA was looking for wider doors to fix this issue.

OUR SOLUTION

We discussed with the customer how big they need to make the rough opening to make a 42" wide door work. Heartland went out to measure to the opening before NWGF manufactured the frames to insure we can make what the customer is envisioning.

RESULTS ACCOMPLISHED

We supplied and installed handicap-accessible entrances. Our commitment to inclusivity and accessibility is reflected in the seamless implementation of entrances that cater to individuals with diverse mobility needs. Whether it's ramps, automated doors, or other specialized features, our installations are designed to enhance accessibility, ensuring everyone can navigate and enter spaces with ease and dignity.

Why was Brin Glass best suited for the work?

Both NWGF and Heartland have been working with storefront applications for many years and were able to help the customer with our expertise. Also, customers like that we are able to do the whole project in-house "supply and install". A lot of companies just supply or install and that is what makes Brin special.

"Thanks for fixing our panes"
- Jake Fitch, Area Chief Engineer

Liberty Restaurant & Bar, St. Michael, MN

Contact

Howard Larson - Owner

Project Start 9-8-23

Project End 10-5-23

Executed By Northwestern Glass Fab & Heartland Glass

